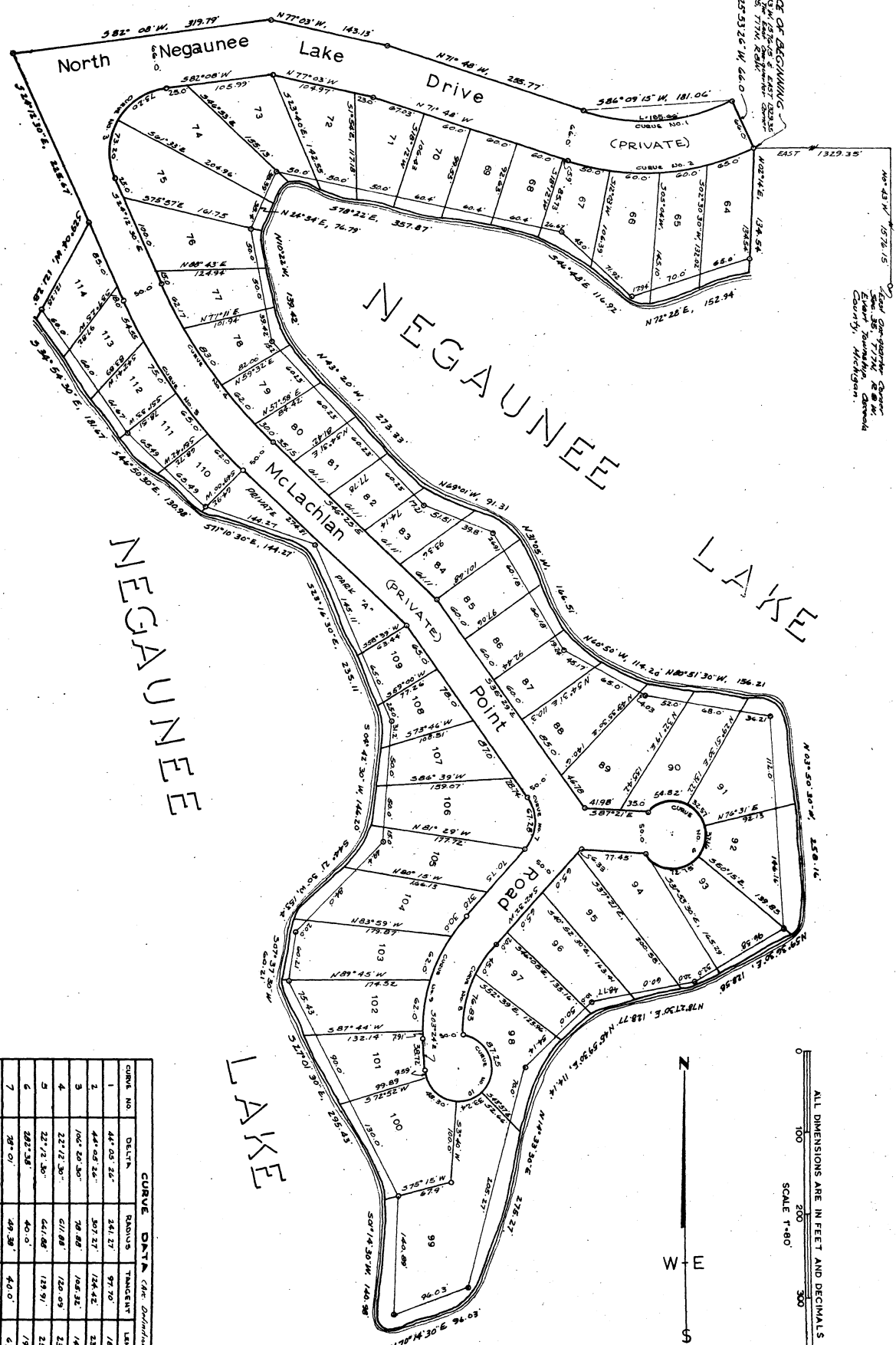


NEGAUNEE LAKE SUBDIVISION NO. 3

PART OF THE NORTHEAST ONE-QUARTER OF SECTION 35,
T17N, R8W, EVART TOWNSHIP, OSCEOLA COUNTY, MICHIGAN.

All lots extend to water's edge.
Lots 91, 92 & 99 front on Lake.



PLACE OF BEGINNING
At the NE corner of the
Section 35, T17N, R8W,
Osceola County, Michigan.

Paul B. Lapham
Surveyor
Osceola County, Michigan

NEGAUNEE LAKE

NEGAUNEE LAKE

CURVE NO.	DELTA	RADIUS	TANGENT	LENGTH
1	44° 03' 26"	241.27'	97.70'	186.45'
2	44° 03' 26"	207.27'	124.42'	235.60'
3	104° 20' 30"	78.88'	146.32'	146.40'
4	22° 12' 30"	511.88'	120.09'	237.17'
5	22° 12' 30"	641.68'	123.91'	236.84'
6	283° 38'	40.0'		197.30'
7	99° 01'	49.38'	44.0'	67.28'
8	43° 56'	121.97'	64.40'	121.83'
9	43° 56'	201.87'	85.63'	141.21'
10	258° 31'	40.0'		178.30'

Paul B. Lapham - Registered Surveyor 9433 - Clare, Michigan
Sheet 2 of 2 Shows
COPY

46943

NEGAUNEE LAKE SUBDIVISION NO. 3

PART OF THE NORTHEAST ONE-QUARTER OF SECTION 35,
T17N, R8 W, EVART TOWNSHIP, OSCEOLA COUNTY, MICHIGAN.

46943

DEDICATION

KNOW ALL MEN BY THESE PRESENTS, That we, Russell N. McLaughlin and Beada S. McLaughlin, his wife, and Elmer E. McLaughlin, also now-living, between Elmer E. McLaughlin and Beada S. McLaughlin, his wife, and Dorothy L. McLaughlin and Dorothy L. McLaughlin, his wife, and Edward Morgan and Judith Ann Morgan, his wife, (partnership recorded in Osceola County Clerk's Office, No. 403) as proprietors, have caused this land embraced in the annexed plat to be surveyed, laid-out and platted to be known as "NEGAUNEE LAKE SUBDIVISION No. 3, Part of the Northeast one-quarter of Section 35, T 17 N, R 8 W, Evart Township, Osceola County, Michigan," and that the Private Drive and Road, as shown on said plat and the Private Park "A" as shown on said plat are hereby dedicated to the use of the property owners of said Section 35, T 17 N, R 8 W.

Witnesses:

Clavin E. Fittman
Clavin E. Fittman
Beada M. Pitt
Beada M. Pitt

Signed:

Russell N. McLaughlin
Russell N. McLaughlin
Beada S. McLaughlin
Beada S. McLaughlin
Elmer E. McLaughlin
Elmer E. McLaughlin
Dorothy L. McLaughlin
Dorothy L. McLaughlin
Edward Morgan
Edward Morgan

STATE OF MICHIGAN) On this 6 day of July, 1964, before me, a Notary Public in and for said County, personally came the above named Russell N. McLaughlin and Beada S. McLaughlin, his wife, and Elmer E. McLaughlin, also now-living, between Elmer E. McLaughlin and Beada S. McLaughlin, his wife, and Dorothy L. McLaughlin and Dorothy L. McLaughlin, his wife, and Edward Morgan and Judith Ann Morgan, his wife, doing business as Negaunee Lake Farm, known to me to be the persons who executed the above dedication and acknowledged the same to be their free act and deed.

By commission expires April 12, 1966

DESCRIPTION OF LAND PLATTED

CLAVIN E. FITTMAN
Notary Public, Osceola County, Michigan

The land embraced in the annexed plat of Negaunee Lake Subdivision No. 3, Part of the Northeast one-quarter of Section 35, T 17 N, R 8 W, Evart Township, Osceola County, Michigan, is described as: Beginning N 0° 43' N, 1576.15 feet and East 1329.25 feet from the East one-quarter corner of said Section 35, T 17 N, R 8 W, thence, N 29° 53' 28" W, 66.0 feet; thence, on a curve to the Right, having a delta of 44° 05' 46", a radius of 241.27 feet; a tangent of 97.10 feet, length of 183.66 feet; thence, S 72° 05' 12" W, 121.25 feet; thence, S 89° 08' 1" W, 219.79 feet; thence, S 24° 18' 30" E, 255.67 feet; thence, S 29° 04' E, 121.25 feet; thence, S 34° 54' 30" E, 183.67 feet; thence, S 48° 50' 35" E, 130.99 feet; thence, S 71° 10' 30" E, 144.27 feet; thence, S 20° 18' 30" E, 225.11 feet; thence, S 04° 42' 30" W, 146.20 feet; thence, S 44° 21' 30" W, 135.4 feet; thence, S 07° 37' 30" W, 60.21 feet; thence, S 27° 01' 30" E, 255.43 feet; thence, S 01° 14' 30" W, 140.98 feet; thence, N 70° 14' 30" E, 98.03 feet; thence, N 13° 53' 30" E, 275.27 feet; thence, N 45° 59' 30" E, 111.14 feet; thence, N 78° 27' 30" E, 128.77 feet; thence, N 57° 58' 30" E, 228.13 feet; thence, N 14.80 feet; thence, N 30° 11' 45" E, 116.25 feet; thence, N 68° 01' W, 91.31 feet; thence, N 43° 20' E, 273.53 feet; thence, N 10° 22' W, 139.42 feet; thence, N 24° 34' E, 76.79 feet; thence, S 78° 22' E, 357.47 feet; thence, S 48° 48' E, 116.92 feet; thence, N 72° 28' E, 122.94 feet; thence, N08° 14' E, 134.14 feet, back to the place of beginning. Containing 51 lots and one Private Park "A".

COPY

4-14-64
I, Clavin E. Fittman, Notary Public in and for said County, do hereby certify that the foregoing is a true and correct copy of the original plat as recorded in the Register of Deeds for said County, Michigan, on this 16 day of July, 1964.
FILED IN EVART TOWNSHIP, OSCEOLA COUNTY, MICHIGAN, on this 16 day of July, 1964.
By Clavin E. Fittman
Notary Public in and for said County, Michigan.

Recorder's Office
Osceola County, S.S.
Plat of Negaunee Lake
Subdivision No. 3
was recorded this 16 day of July, 1964.
Attest: Clavin E. Fittman
Notary Public in and for said County, Michigan.

Certificate of Municipal Approval

This plat was approved by the Township Board of Evart Township at a meeting held on the 7th day of July, 1964, and is in compliance with Section 19, and that the width of lots conforms with requirements of Section 30, Act 172, of 1929, as amended.

Paul Hendler
Paul Hendler
Township Clerk

CERTIFICATE OF APPROVAL BY BOARD OF COUNTY ROAD COMMISSIONERS

This plat has been examined and was approved on the 6th day of July, 1964, by the Osceola County Board of Road Commissioners.

John Rogovin
John Rogovin
John R. Leach
County Clerk

CERTIFICATE OF APPROVAL BY COUNTY BOARD

This plat was approved by the Osceola County Plat Board on the 2nd day of July, 1964.

Paul A. Dwyer
Paul A. Dwyer
County Clerk

Edward S. Johnson
Edward S. Johnson
Register of Deeds

COUNTY TREASURER'S CERTIFICATE RELATIVE TO TAXES

Office of County Treasurer
Osceola County, Michigan
I hereby certify that there are no tax liens or titles held by the State on the lands described herein and that the taxes for the year ending on said lands, for the five years preceding the 27th day of July, 1964, and that the taxes for said period of five years are paid, as shown by the records of this office.
This certificate does not apply to taxes, if any, now in the process of collection by Township, City or Village collecting officers.

Walter D. Johnson
Walter D. Johnson
County Treasurer

SURVEYOR'S CERTIFICATE

I hereby certify that the plat herein delineated is a correct one and that permanent metal monuments consisting of bars not less than one-half inch in diameter and 36 inches in length, placed in a concrete cylinder at least four inches in diameter and 36 inches in depth, have been placed at points marked (a) as shown shown at all angles in the corners of the lots and at the intersections of lines of streets with the boundaries of the plat as shown on said plat.

Paul B. Johnson
Paul B. Johnson
Registered Surveyor No. 9433
370 W. W. Whosey
Clare, Michigan

START 18 2 SHAW
COPY