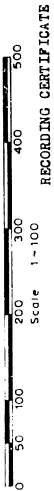


NEGAUNEE LAKE SUBDIVISION NO. 4

Part of the S.W. 1/4 of the N.E. 1/4, & Part of the S.E. 1/4 of the N.W. 1/4, & Part of the N.E. 1/4, & Part of the S.E. 1/4 of Section 35, T17N, R8W, Evert Township, Osceola County, State of Michigan.

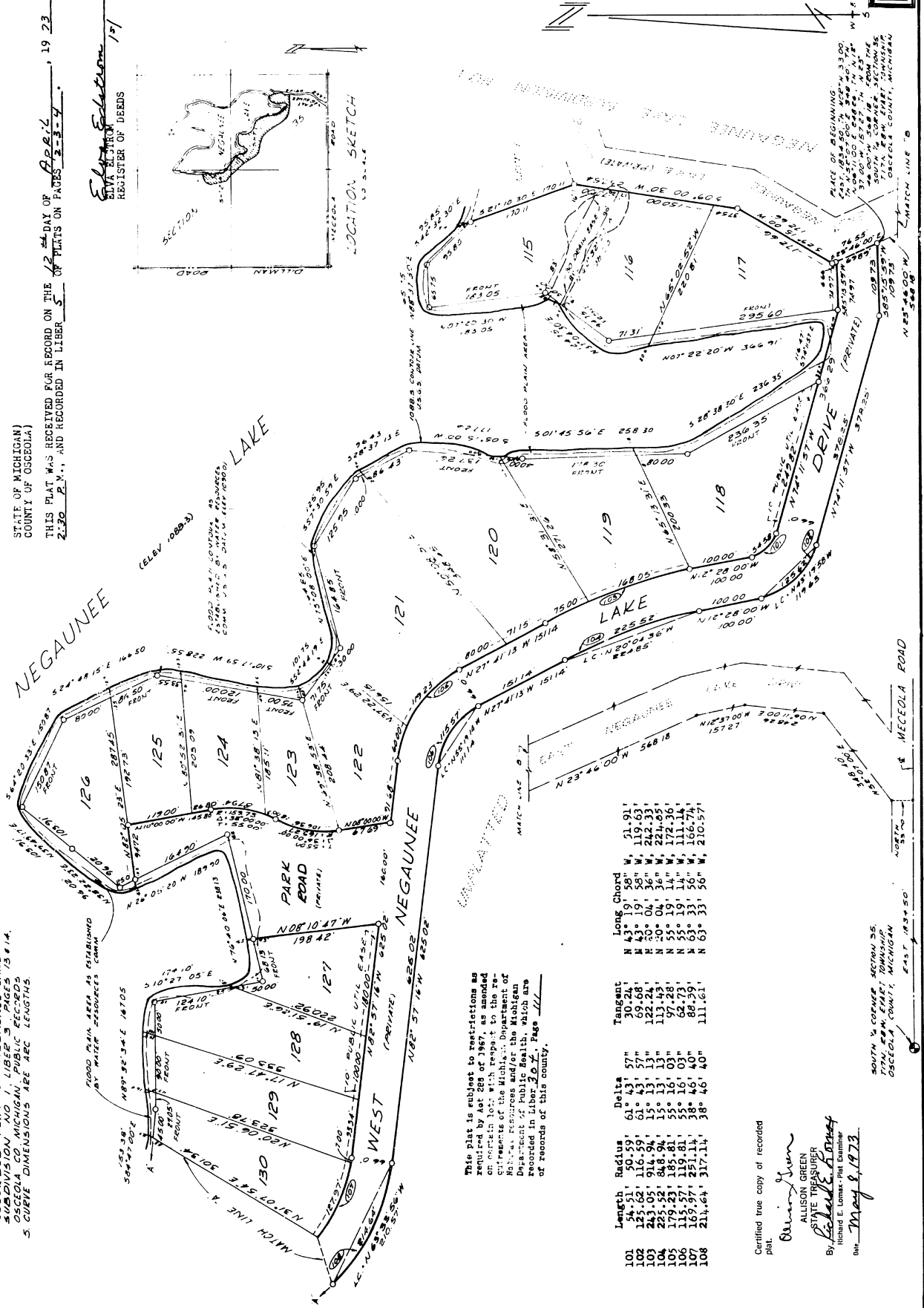
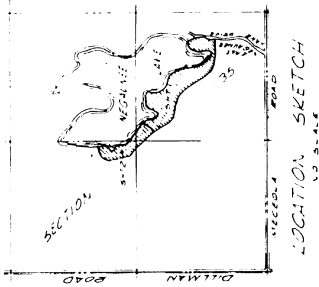
- LEGEND DIMENSIONS ARE IN FEET
 1. CONCRETE MONUMENTS HAVE BEEN PLACED AT ALL CORNERS
 2. ALL POINTS MARKED WITH
 3. LOT CORNERS HAVE BEEN MARKED WITH
 4. BOUNDARIES WERE ESTABLISHED FROM THE
 5. RECORDED PLAT OF NEGAUNEE LAKE
 6. SUBDIVISION NO. 1, LIBER 3, PAGES 13 & 14,
 7. OSCEOLA CO. MICHIGAN, PUBLIC RECORDS
 8. CURVE DIMENSIONS ARE ARC LENGTHS



STATE OF MICHIGAN
 COUNTY OF OSCEOLA

THIS PLAT WAS RECEIVED FOR RECORD ON THE 12 DAY OF April, 1923, AT 2:30 P.M., AND RECORDED IN LIBER 5 OF PLATS ON PAGES 3-4.

Elva E. Selkirk
 REGISTER OF DEEDS



This plat is subject to restrictions as required by Act 289 of 1967, as amended on certain lots with respect to the re-division of the Michigan Department of Public Safety for the Michigan Department of Public Safety which are recorded in Liber 30 of Page 1111 of records of this county.

Certified true copy of recorded plat.

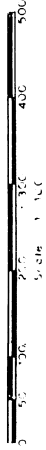
Allison Green
 ALLISON GREEN
 STATE TREASURER
 By *Richard E. Lomas*
 Richard E. Lomas, Plat Examiner
 Date: *May 8, 1973*

SOUTH 1/4 CORNER SECTION 35,
 T17N, R8W, EVERT TOWNSHIP,
 OSCEOLA COUNTY, MICHIGAN

53701

NEGAUNEE LAKE SUBDIVISION NO. 4

Part of the SW 1/4 of the NE 1/4, & Part of the SE 1/4 of the NW 1/4, & Part of the SW 1/4, & Part of the SE 1/4 of Section 35, T17N, R8W, Evert Township, Osceola County, State of Michigan.



COUNTY TREASURER'S CERTIFICATE

THE RECORDS IN MY OFFICE SHOW NO UNPAID TAXES OR SPECIAL ASSESSMENTS FOR THE FIVE YEARS PRECEDING August 7, 1922, INVOLVING THE LANDS INCLUDED IN THIS PLAT.

Osceola County
Mabel Bates
COUNTY TREASURER

COUNTY DRAIN COMMISSIONER'S CERTIFICATE

APPROVED ON August 7, 1922 AS COMPLYING WITH SECTION 192 OF ACT 288, P.A. 1967, AND THE APPLICABLE RULES AND REGULATIONS PUBLISHED BY MY OFFICE IN THE COUNTY OF OSCEOLA.

James E. Kober
DRAIN COMMISSIONER

CERTIFICATE OF COUNTY ROAD COMMISSIONERS

APPROVED ON February 24, 1922 AS COMPLYING WITH SECTION 183 OF ACT 288, P.A. 1967, AND THE APPLICABLE RULES AND REGULATIONS OF THE BOARD OF ROAD COMMISSIONERS OF OSCEOLA COUNTY.

David J. DeGard
CHAIRMAN
Elias Kozern
MEMBER

CERTIFICATE OF MUNICIPAL APPROVAL

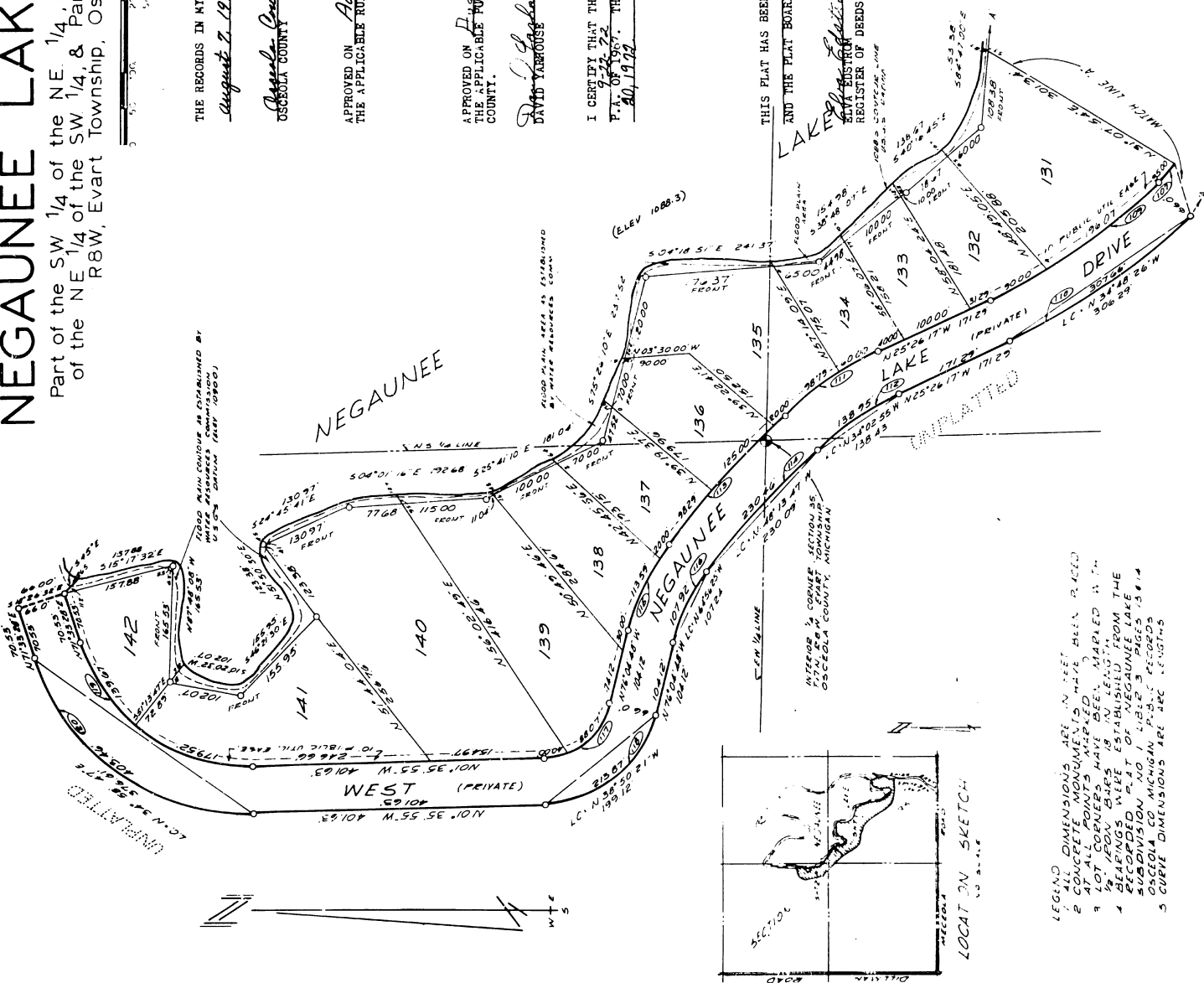
I CERTIFY THAT THIS PLAT WAS APPROVED BY THE TOWNSHIP BOARD OF EVART AT A MEETING HELD ON February 22, 1922 AND WAS REVIEWED AND FOUND TO BE IN COMPLIANCE WITH ACT 288, P.A. OF 1967. THIS PLAT WAS APPROVED BY THE OSCEOLA COUNTY HEALTH DEPARTMENT ON August 10, 1922

Peter White
TOWNSHIP CLERK

COUNTY PLAT BOARD CERTIFICATE

THIS PLAT HAS BEEN REVIEWED AND IS APPROVED BY THE OSCEOLA COUNTY PLAT BOARD ON January 15, 1923 AS BEING IN COMPLIANCE WITH ALL OF THE PROVISIONS OF ACT 368, P.A. 1967, AND THE PLAT BOARD'S APPLICABLE RULES AND REGULATIONS.

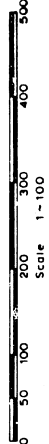
Carl L. Wynn
COUNTY CLERK
Mabel Bates
TREASURER



Length	Radius	Dist	Target	Long Chord
107	109.97'	271.11"	38° 16' 40"	N 61° 18' 26" W, 166.71'
108	286.07'	874.71"	18° 44' 19"	N 34° 18' 26" W, 286.80'
109	307.66'	940.71"	18° 44' 19"	N 34° 02' 26" W, 306.29'
110	158.79'	528.30"	17° 13' 17"	E 34° 02' 55" W, 158.19'
111	138.95'	462.30"	17° 13' 17"	N 34° 02' 55" W, 138.43'
112	243.89'	1251.21"	11° 08' 27"	N 48° 13' 47" W, 242.91'
113	230.46'	1185.21"	11° 08' 27"	N 48° 13' 47" W, 230.09'
114	103.22'	343.54"	22° 16' 47"	N 64° 56' 25" W, 107.24'
115	103.22'	343.54"	22° 16' 47"	N 64° 56' 25" W, 107.24'
116	124.87'	68.52"	74° 28' 53"	N 34° 20' 21" W, 119.74'
117	213.87'	164.99"	74° 28' 53"	N 34° 20' 21" W, 119.74'
118	319.19'	249.99"	73° 09' 23"	N 34° 58' 47" E, 376.61'
119	403.46'	315.99"	73° 09' 23"	N 34° 58' 47" E, 376.61'
120				

NEGAUNEE LAKE SUBDIVISION NO. 4

Part of the SW 1/4 of the NE 1/4, & Part of the SE 1/4 of the NW 1/4, & Part of the NE 1/4 of the SW 1/4, & Part of the SE 1/4 of Section 35, T17N, R8W, Evert Township, Osceola County, State of Michigan.



PROPRIETOR'S CERTIFICATE

I, PAUL B. LAPHAM, SURVEYOR, CERTIFY:

THAT I HAVE SURVEYED, DIVIDED AND MAPPED THE LAND SHOWN ON THIS PLAN DESCRIBED AS FOLLOWS: "NEGAUNEE LAKE SUBDIVISION NO. 4, PART OF THE S.W. 1/4 OF THE N.E. 1/4, & PART OF THE S.E. 1/4 OF THE N.W. 1/4, & PART OF THE N.E. 1/4 OF THE S.W. 1/4, & PART OF THE S.E. 1/4 OF SECTION 35, T17N, R8W, EVERT TOWNSHIP, OSCEOLA COUNTY, STATE OF MICHIGAN," COMMENCING AT THE SOUTH-QUARTER CORNER OF SECTION 35, LONG THE WEST LINE OF THE NEGAUNEE LAKE SUBDIVISION NO. 3, LONG THE WEST LINE OF THE NEGAUNEE LAKE SUBDIVISION NO. 1 ON THE FOLLOWING COURSES: S 52° 07' E 348.40 FEET; THENCE N 00° 11' E 248.26 FEET; THENCE N 12° 37' W 157.27 FEET; THENCE N 23° 40' W 568.16 FEET TO THE TRUE PLACE OF BEGINNING OF THE FOLLOWING DESCRIBED PARCEL OF LAND, THENCE: A CURVE TO THE RIGHT HAVING A RADIUS OF 110.59 FEET, A DELTA OF 01° 43' 57", A TANGENT OF 99.68 FEET; THENCE, 225.52 FEET ON A CURVE TO THE LEFT HAVING A RADIUS OF 845.74 FEET, A DELTA OF 15° 13' 30", A TANGENT OF 113.45 FEET; THENCE, 113.45 FEET; THENCE, 26 THE LEFT HAVING A RADIUS OF 119.41 FEET, A DELTA OF 55° 18' 03", A TANGENT OF 62.73 FEET; AND A LONG CHORD BEARING N 55° 19' 11" W 111.14 FEET; THENCE, N 82° 57' 16" W 625.02 FEET; THENCE, 211.64 FEET ON A CURVE TO THE RIGHT HAVING A RADIUS OF 317.11 FEET, A DELTA OF 38° 46' 40", A TANGENT OF 111.61 FEET; AND A LONG CHORD BEARING N 63° 33' 50" W 210.57 FEET; THENCE, 307.56 FEET ON A CURVE TO THE RIGHT HAVING A RADIUS OF 940.71 FEET, A DELTA OF 18° 44' 19", A TANGENT OF 155.22 FEET; AND A LONG CHORD BEARING N 34° 48' 26" W 300.29 FEET; THENCE, N 25° 20' 17" W 171.29 FEET; THENCE, 138.95 FEET ON A CURVE TO THE LEFT HAVING A RADIUS OF 462.30 FEET, A DELTA OF 17° 13' 17", A TANGENT OF 70.00 FEET; AND A LONG CHORD BEARING N 34° 02' 25" W 261.84 FEET; THENCE, 231.85 FEET; THENCE, 115.59 FEET; AND A LONG CHORD BEARING N 48° 13' 47" W 230.09 FEET; THENCE, 107.92 FEET ON A CURVE TO THE LEFT HAVING A RADIUS OF 277.54 FEET; A DELTA OF 22° 16' 47", A TANGENT OF 54.65 FEET; AND A LONG CHORD BEARING N 64° 56' 25" W 107.24 FEET; THENCE, N 76° 04' 48" W 104.12 FEET; THENCE, 213.87 FEET ON A CURVE TO THE RIGHT HAVING A RADIUS OF 164.52 FEET, A DELTA OF 74° 28' 53", A TANGENT OF 125.06 FEET; AND A LONG CHORD BEARING N 38° 50' 21" W 199.12 FEET; THENCE, N 01° 35' 55" W 401.65 FEET; THENCE, 403.46 FEET ON A CURVE TO THE RIGHT HAVING A RADIUS OF 315.99 FEET, A DELTA OF 73° 09' 23", A TANGENT OF 234.49 FEET; AND A LONG CHORD BEARING N 34° 58' 06" W 576.01 FEET; THENCE, 576.01 FEET; THENCE, 24 THE LEFT HAVING A RADIUS OF 100.00 FEET; THENCE, 195.17 FEET; THENCE, 157.88 FEET; THENCE, N 87° 48' 08" W 165.53 FEET; THENCE, S 10° 20' 32" W 102.07 FEET; THENCE, S 46° 21' 30" E 155.95 FEET; THENCE, N 51° 30' 30" E 123.38 FEET; THENCE, S 24° 45' 41" E 130.97 FEET; THENCE, S 24° 01' 16" E 192.68 FEET; THENCE, S 25° 41' 10" E 181.04 FEET; THENCE, S 75° 26' 10" E, 237.52 FEET; THENCE, S 04° 18' 51" E 241.37 FEET; THENCE, S 38° 48' 07" E 154.98 FEET; THENCE, S 40° 16' 45" W 138.67 FEET; THENCE, S 84° 47' 00" E 153.38 FEET; THENCE, 01° 00" E, 238.13 FEET; THENCE, N 26° 05' 05" W 100.77 FEET; THENCE, S 10° 17' 05" E 96.02 FEET; THENCE, S 20° 48' 35" E 171.50 FEET; THENCE, S 10° 17' 59" W 228.55 FEET; THENCE, S 52° 44' 19" E, 101.75 FEET; THENCE, N 75° 08' 00" E 164.85 FEET; THENCE, S 57° 30' 59" E 125.95 FEET; THENCE, S 28° 37' 13" E 96.43 FEET; THENCE, S 05° 15' 00" W 177.26 FEET; THENCE, S 01° 45' 26" E 258.30 FEET; THENCE, S 28° 38' 30" E, 236.35 FEET; THENCE, N 37° 04' 30" E, 116.47 FEET; THENCE, N 07° 22' 20" W, 360.91 FEET; THENCE, N 88° 37' 30" E, 55.75 FEET; THENCE, S 42° 32' 30" E, 95.85 FEET TO THE NORTHWEST CORNER OF LOT 1, NEGAUNEE LAKE SUBDIVISION NO. 1, THENCE, LEAVING THE SHORELINE OF NEGAUNEE LAKE AND GOING ALONG THE WEST LINE OF THE COURSE, 09° 00' 30" W 297.54 FEET; THENCE, S 29° 14' 00" W, 172.66 FEET; THENCE, S 23° 49' 00" E, 76.55 FEET BACK TO THE PLACE OF BEGINNING. CONTAINING 26 LOTS.

THAT I HAVE MADE SUCH SURVEY, LAND-DIVISION AND PLAT BY THE DIRECTION OF THE OWNERS OF SUCH LAND.

THAT SUCH PLAT IS A CORRECT REPRESENTATION OF ALL EXTERIOR BOUNDARIES OF THE LAND SURVEYED AND THE SUBDIVISION OF IT.

THAT THE REQUIRED MONUMENTS AND LOT MARKERS HAVE BEEN LOCATED IN THE GROUND OR THAT SURETY HAS BEEN DEPOSITED WITH THE MUNICIPALITY, AS REQUIRED BY SECTION 125 OF THE ACT.

THAT THE ACCURACY OF SURVEY IS WITHIN THE LIMITS REQUIRED BY SECTION 126 OF THE ACT.

THAT THE BEARINGS SHOWN ON THE PLAT ARE EXPRESSED AS REQUIRED BY SECTION 126 (3) OF THE ACT AND AS EXPLAINED IN THE LEGEND.

8-3-72
DATE

PAUL B. LAPHAM & ASSOCIATES, INC.
631 WEST U.S. 10
CLARE, MICHIGAN 48617



PAUL B. LAPHAM, PRINCIPAL, R.L.S. NO. 9433

PROPRIETOR'S CERTIFICATE

WE AS PROPRIETORS CERTIFY THAT WE CAUSED THE LAND EMBRACED IN THIS PLAT TO BE SURVEYED, DIVIDED, MAPPED AND DEDICATED AS REPRESENTED ON THIS PLAT AND THAT WEST NEGAUNEE LAKE DRIVE, A/C/D PARTS, ROAD ARE PRIVATE, FOR THE USE OF THE PROPRIETORS, INCLUDING THAT ALL OTHER PARTSMENTS ARE FOR THE USES SHOWN ON THE PLAT; THAT THE WATERFRONT LOTS EXTEND TO THE WATER'S EDGE AS SHOWN.

NEGAUNEE LAKE FARM
RURAL ROUTE NO. 1
EVERT, MICHIGAN 49631

BY: *Elmer E. McLachlan*
Elmer E. McLachlan, Attorney-in-Fact

George A. Schemanski
George A. Schemanski, Jr.
EDWARD TROMBATH, JR.

Ernest S. Lancaster
ERNEST S. LANCASTER, 1881 Doris Street, Livonia, Michigan 48150

Matthew Lancaster
MATTHEW LANCASTER, 1881 Doris Street, Livonia, Michigan 48150

Joyce Warrick
JOYCE WARRICK, 6351 Dixie, Detroit, Michigan 48239

ACKNOWLEDGEMENT

STATE OF MICHIGAN } ss:
WAYNE COUNTY }

PERSONALLY CAME BEFORE ME THIS 5th DAY OF August 1972, THE ABOVE-NAMED ERNEST S. LANCASTER AND MILDRED LANCASTER, HIS WIFE, AND JOYCE WARRICK, A DIVORCED MAN, TO ME KNOWN TO BE THE PERSONS WHO EXECUTED THE FOREGOING INSTRUMENT AND ACKNOWLEDGED THAT THEY EXECUTED THE SAME AS THEIR FREE ACT AND DEED.

NOTARY PUBLIC *George A. Schemanski*, Wayne COUNTY

MY COMMISSION EXPIRES May 25-1976

ACKNOWLEDGEMENT

STATE OF MICHIGAN } S.S.
CLARE COUNTY }

PERSONALLY CAME BEFORE ME THIS 5th DAY OF August 1972, THE ABOVE-NAMED EMER E. MC LACHLAN, ATTORNEY-IN-FACT OF NEGAUNEE LAKE FARM, A PARTNERSHIP BETWEEN EMER E. MC LACHLAN AND EVELYN MC LACHLAN, HIS WIFE, AND DOBOTHY L. MC LACHLAN, (SHE HAS BEEN DECEASED) AND MATHIAS AGRAN, HIS WIFE (RECORDED IN OSCEOLA COUNTY CLERK'S OFFICE (MICHIGAN) AS PROPRIETORS TO ME KNOWN TO BE THE PERSON WHO EXECUTED THE FOREGOING INSTRUMENT, AND TO ME KNOWN TO BE SUCH ATTORNEY-IN-FACT OF SAID PARTNERSHIP, AND ACKNOWLEDGED THAT HE EXECUTED THE FOREGOING INSTRUMENT AS SUCH ATTORNEY-IN-FACT AS THE FREE ACT AND DEED OF SAID PARTNERSHIP, BY ITS AUTHORITY.

NOTARY PUBLIC *George A. Schemanski*, Clare County, CLARE COUNTY

MY COMMISSION EXPIRES 11-17-74